



**AIRTECHNIC**

www.airtechnic.gr

Air-Conditioning & Ventilation Components & Systems

# ● SINGLE ROOM HEAT RECOVERY VENTILATOR **HRWA 64**



 [www.airtechnic.gr](http://www.airtechnic.gr)

 [www.facebook.com/Airtechnic.gr](https://www.facebook.com/Airtechnic.gr)

 [www.instagram.com/airtechnic.chatzoudis](https://www.instagram.com/airtechnic.chatzoudis)

V. 4

MAXIMUM  
AIR FLOW

**64**  
m<sup>3</sup>/h

ADJUSTABLE  
AIR DUCT

**Ø 159**  
mm  
230 ÷ 420  
mm

HRWA 64



- ◆ Ceramic enthalpy heat exchanger, up to **97%** efficiency, treated with an **antibacterial composition** which last for **10 years**.
- ◆ Reversible axial fan with a **EC** motor with thermal overheating protection, low power consumption and ball bearings for long service life.
- ◆ **IP22** protection. Noise level: **≤ 31,9 dB(A)**.
- ◆ Front cover with **automatic** shutter.
- ◆ **Silicone waterproof circle** for being fixed on the air duct.
- ◆ Two integrated **G3** air filters with **antibacterial** treatment. F8 filter is available upon request, but when installed, it reduces the air flow down to 40 m<sup>3</sup>/h.
- ◆ **Renote control** and **LED** display on the front panel.
- ◆ **Ventilation mode** with air supply or air exhaust.
- ◆ **Automatic mode** changing between the air supply and the air exhaust every 75 sec.

**REMOTE CONTROLLER &  
LED INDICATORS**



- ⏻ ON / OFF
- 💡 LED light switch

3 speed fan control LED indicators.

- ⊕ Fan speed increase
- ⊖ Fan speed decrease

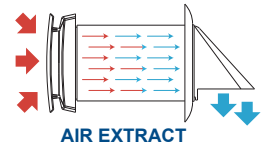
LED color display shows the different functioning modes :

- Green**  
Ventilation mode - air supply
- Red**  
Ventilation mode - air exhaust
- Yellow**  
Automatic mode - air supply & air exhaust every 75 sec.

**VENTILATION & REGENERATION MODES**

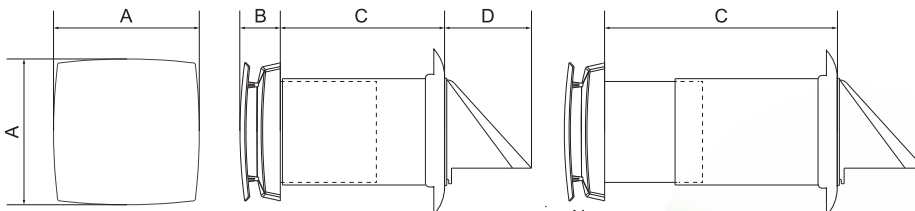
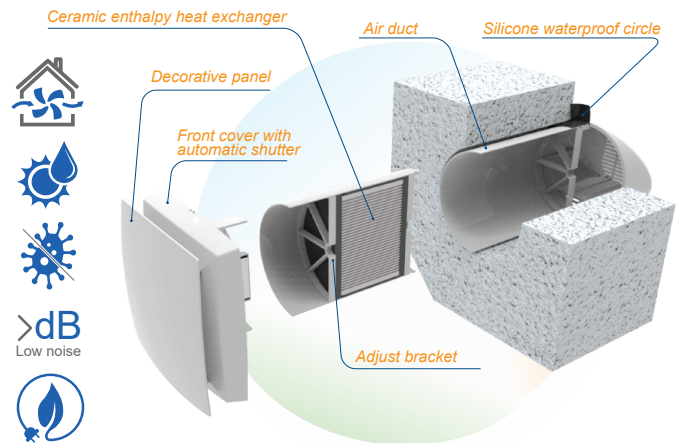
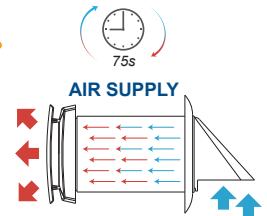
**VENTILATION mode**

The ventilator runs in the air exhaust or air supply mode with a set speed. In case of synchronous operation of two connected ventilators, one unit operates in the supply mode and the other one in the extract mode.



**REGENERATION mode**

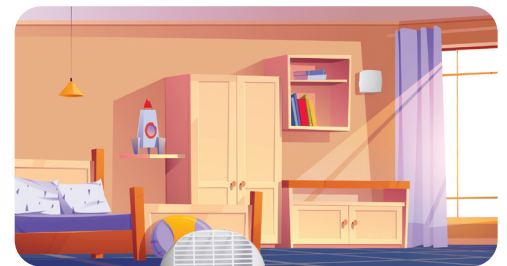
The ventilator runs in two cycles, 75 sec each, to provide heat and moisture regeneration.



**DIMENSIONS mm**

A	B	C	D	M	N
205	60	230 ÷ 420	129	86	40

HRWA	AIR FLOW m <sup>3</sup> /h			POWER W	NOISE LEVEL dB(A)
	High	Med	Low		
64	64	55	26	11,3	≤ 31,9





ISO 9001:2015



ISO 14001:2015

Management System  
ISO 14001:2015  
Valid until:  
2024-05-24



www.tuv.com  
ID: 9108660718

### AIR HANDLING UNITS




### HEAT EXCHANGERS




### FAN COIL UNITS



### FANS & FAN SECTIONS




### FIRE DAMPERS



### AIR OUTLETS



### STEAM HUMIDIFIERS - DEHUMIDIFIERS



### CENTRAL VACUUM SYSTEMS



**TUBO**  
THINK CLEAN

### STAINLESS STEEL CHIMNEYS



### AIR FILTERS



### AIR CURTAINS



### EVAPORATIVE COOLING




#### Main Office ATHENS

📍 Paparrigopoulou 10 & Lagada,  
12132, Peristeri, Athens  
211 - 705.55.00  
✉ sales@airtechnic.gr

#### Factory - THIVA

📍 4<sup>th</sup> km Thiva - Chalkida Hwy,  
32200, Thiva  
22620 - 89.006  
✉ factory@airtechnic.gr

#### Factory - THESSALONIKI

📍 End of Meandrou Str.,  
57013, Oraiokastro, Thessaloniki  
2311 - 82.40.00  
✉ thessaloniki@airtechnic.gr