

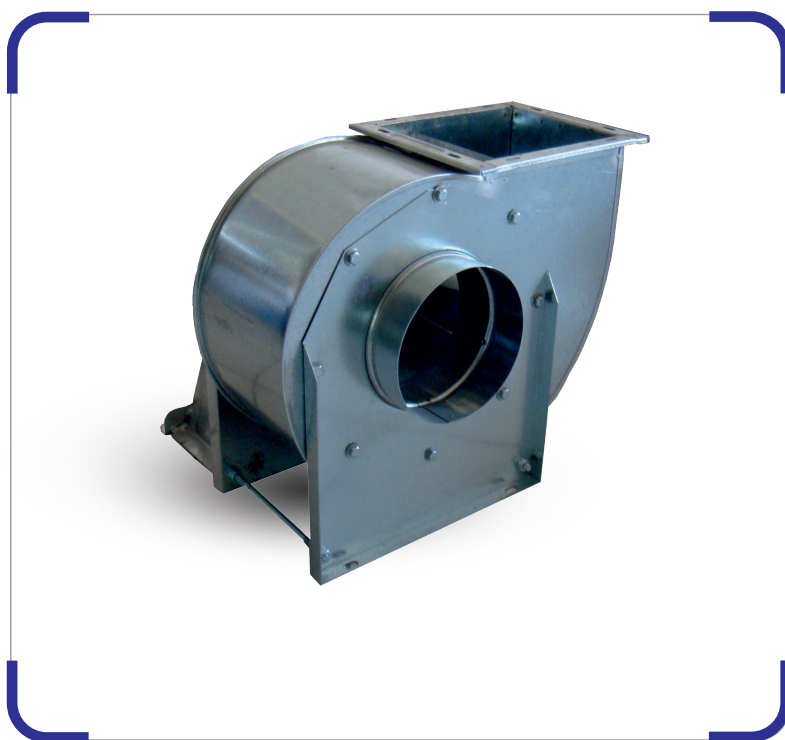


**AIRTECHNIC**

www.airtechnic.gr

Air-Conditioning & Ventilation Components & Systems

# ● SINGLE INLET CENTRIFUGAL FANS



www.airtechnic.gr

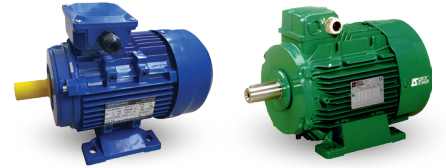
www.facebook.com/Airtechnic.gr

www.instagram.com/airtechnic.chatzoudis

V. 4

# SINGLE INLET CENTRIFUGAL FANS

max. **16.000** m<sup>3</sup>/h



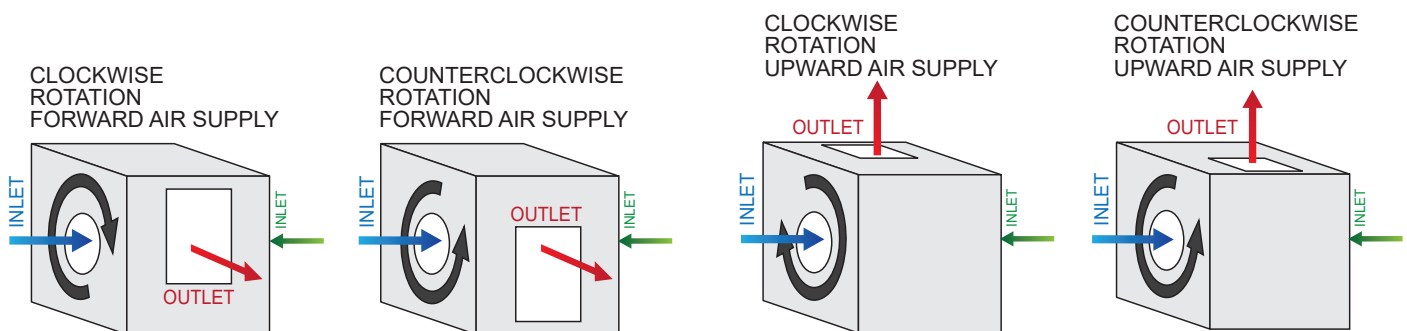
## TECHNICAL CHARACTERISTICS

- Low & medium pressure fans, manufactured by **AIRTECHNIC** with CE certification. Shell made of galvanized steel sheet. **IP55**, class **F** motors.
- Suitable for ventilation of **rotisseries**, **professional kitchens**, industrial areas, paint shops etc.
- Impeller dynamically and statically balanced, with **sparse spoon-shaped fins** for easy cleaning, preventing the accumulation of greasy residues, thus increasing its lifespan.

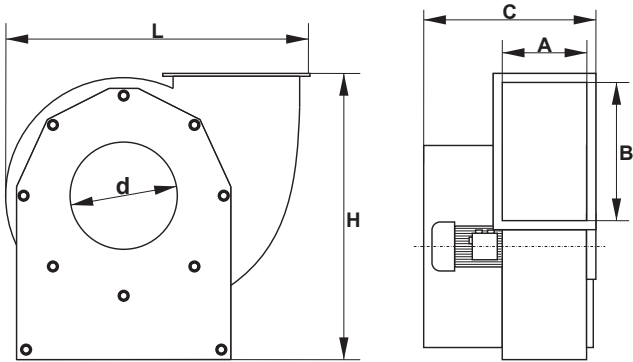
- Available models with **Sirocco type** impeller, dynamically and statically balanced.
- Speed can be adjust by **REB-01** at 230V & **INVERTER** at 400V.
- It is possible (with extra charge) to choose a simple or explosion-proof **ABB**, **SIEMENS** or **EMERSON** motor.

POWER HP	INLET GRILLE Ø mm	AIR FLOW m <sup>3</sup> /h	FAN SECTION WEIGHT  Kg	FAN SECTION DIMENSIONS cm HEIGHT x WIDTH x LENGTH					
				AIR SUPPLY UP			AIR SUPPLY FRONT		
				H	W	L	H	W	L
<b>1.450 R.P.M.</b>									
0,5	200	2.700	44	62	64	64	72	70	64
1	250	5.000	50	71	71	79	90	70	70
1,5		6.000	56	71	71	79	90	70	70
2	300	8.000	74	82	82	91	100	82	82
3		9.000	78	82	82	91	100	82	82
3	350	9.000	81	82	86	95	110	86	85
4		11.000	92	90	86	100	110	85	85
5,5	450	13.000	100	90	86	100	115	90	90
7,5		14.500		115	115	111	123,5	115	115
<b>950 R.P.M.</b>									
0,5	250	4.000		71	71	79	90	70	70
1	300	6.000		82	82	91	100	75	80
1,5		8.000		82	82	91	100	75	80
2	350	10.000		90	86	100	115	90	90
3		11.000		90	86	100	115	90	90
4	450	12.500		114	117,1	117,1	123,5	115	115
5,5		16.000		114	117,1	117,1	123,5	115	115

## AIR INLET ON THE RIGHT or THE LEFT SIDE

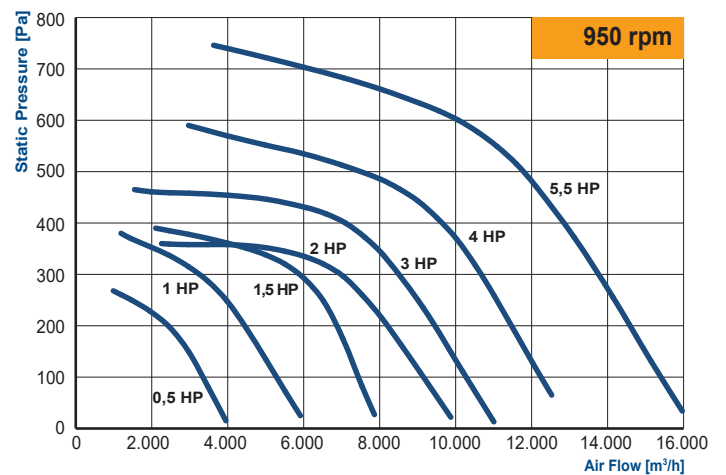
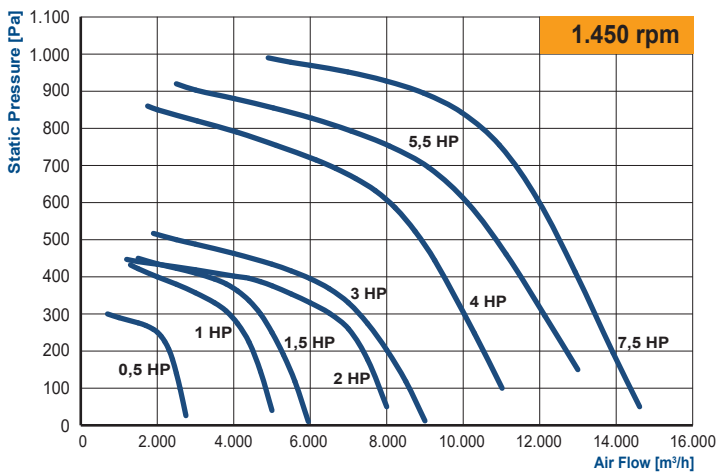


## 1.450 / 950 R.P.M. FANS - DIMENSIONS (mm)



MOTOR POWER HP	A	B	C	H	L	Ø mm
<b>1.450 R.P.M. FANS</b>						
0,5	205	240	485	470	555	200
1,0	225	335	545	585	685	250
1,5	260	335	590	585	685	250
2,0	275	390	625	675	815	300
3,0	275	390	625	675	815	300
3,0 - Ø350	325	395	720	675	815	350
4,0	325	445	750	765	905	350
5,5	325	445	750	765	905	350
7,5	430	570	950	935	1.030	450

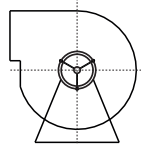
MOTOR POWER HP	A	B	C	H	L	Ø mm
<b>950 R.P.M. FANS</b>						
0,5	225	335	545	585	685	250
1,0	275	390	625	675	815	300
1,5	275	390	625	675	815	300
2,0	325	445	750	765	905	350
3,0	325	445	750	765	905	350
4,0	430	570	950	935	1.030	450
5,5	430	570	950	935	1.030	450



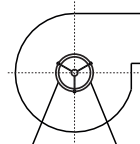
LG 0



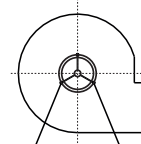
RD 0



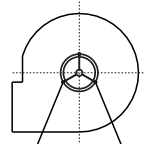
LG 90



RD 90



LG 270



RD 270



ISO 9001:2015



ISO 14001:2015

Management System  
ISO 14001:2015  
Valid until:  
2024-05-24



www.tuv.com  
ID: 9108660718

### AIR HANDLING UNITS

**EUROVENT CERTIFIED PERFORMANCE**  
www.eurovent-certification.com

### HEAT EXCHANGERS

**EC MOTORS**

### FAN COIL UNITS

### FANS & FAN SECTIONS

**BRUSHLESS**

### FIRE DAMPERS

### AIR OUTLETS

### STEAM HUMIDIFIERS - DEHUMIDIFIERS

### CENTRAL VACUUM SYSTEMS

**TUBO THINK CLEAN**

### STAINLESS STEEL CHIMNEYS

### AIR FILTERS

### AIR CURTAINS

### EVAPORATIVE COOLING

#### Main Office ATHENS

📍 Michail Karaoli Str. 19,  
14343, Nea Chalkidona, Athens  
211 - 705.55.00  
✉ sales@airtechnic.gr

#### Factory - THIVA

📍 4<sup>th</sup> km Thiva - Chalkida Hwy,  
32200, Thiva  
22620 - 89.006  
✉ factory@airtechnic.gr

#### Factory - THESSALONIKI

📍 End of Meandrou Str.,  
57013, Oraiokastro, Thessaloniki  
2311 - 82.40.00  
✉ thessaloniki@airtechnic.gr